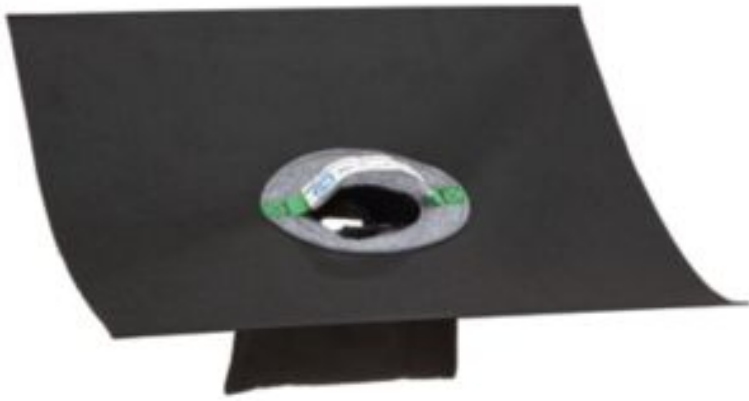


PIG® Frameless Storm Drain Filter for Small Drains

FLT1000 Filters Oil; Sediment; Trash; Debris, For Storm Drains from 23cm to 51cm W & 23cm to 51cm L; Round Drains from 23cm to 51cm Dia., 66cm x 66cm x 25cm

New and improved "witches hat" drain guard design! Catch basin insert protects small drains of all shapes in high-traffic areas with better filtering of oil, sediment, debris and trash from stormwater runoff.

- New! Redesigned for better filtration, improved handling and all-around performance
- Frameless design is ideal for small drains of any shape, even shallow drains
- Heavy-duty, hi-viz strap allows easier handling and removal
- Four-stage filtration process treats more water and removes more oil than basic storm drain filters
- Overflow ports help prevent blockage during high water flow
- Fits circular drain sizes 23cm to 51cm in diameter
- Fits irregular, rectangular and square drain sizes 23cm to 51cm width to 23cm to 51cm length
- Trim product to allow 7-8cm of material to extend above grate
- Pore size is 0.074 mm, 74 microns, 0.0029 inches or 200 sieve



Specifications

| | |
|----------------|---|
| Use With | Storm Drains from 23cm to 51cm W & 23cm to 51cm L; Round Drains from 23cm to 51cm Dia. |
| Colour | Black |
| Dimensions | 66cm W x 66cm L x 25cm H |
| Absorbency | Up to 1.9 L |
| Installation | Installs below grate |
| Sold as | 1 each |
| Weight | .26 kg |
| New Pig Patent | 10,508,430 |

| | |
|-------------------|---|
| # per Pallet | 504 |
| Composition | Insert Strips and Ring: Polyester; Straps: Polyester |
| Filters | Oil; Sediment; Trash; Debris |
| Maximum Flow Rate | 757 ltr./Minute |

Technical Documents

- Instructions for Frameless Storm Drain Filter
- Environmental Protection Act 1990
- The Control of Pollution Act (1974)
- Water Resources Act 1991



New Pig

World's best stuff for leaks, drips and spills.

Hogs Hill • Watt Place • Hamilton International Technology Park • Blantyre • Glasgow • G72 0AH
0800 919 900 • newpig.co.uk • pigpen@newpig.com