

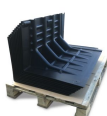


FloodFence Unit

PLSE315 100cm x 58cm x 45cm

FloodFence is a lightweight and quick to deploy water flow diversionary system for businesses and households.

- This light weight, reusable system can be easily connected and deployed rapidly by one person, making it perfect to protect against flash flooding; does not require any pre-applied ballast
- The system is self-balancing with each unit incorporating a slim line base gasket to allow an effective seal to hard-standing ground terrain
- Ideal for controlling and deflecting flowing water, use to respond to flash floods from heavy rain, drain or river overflows, or for burst water mains; can also be used for fire water runoff control
- The moving water flow applies a strong downward pressure onto the FloodFence units to keep them fixed in place, as well as applying pressure to the sealing gaskets
- When connected to other units, the effective linear length of each is 0.91m, and can be used for water flows up to 40cm deep
- Can stack compactly for storage; can fit 38 units per pallet space



Item#	Description	Dimensions	Weight
PLSE315-YW	Yellow	100cm W x 58cm D x 45cm H	4 kg
PLSE315-BK	Black	100cm W x 58cm D x 45cm H	4 kg

Metric Equivalent:

Item#	Description	Dimensions	Weight
PLSE315-YW	Yellow		
PLSE315-BK	Black		

Specifications

Dimensions	100cm W x 58cm D x 45cm H
Sold as	1 each
Weight	4 kg
# per Pallet	38
Composition	ABS

Technical Documents



New Pig

World's best stuff for leaks, drips and spills.

Hogs Hill • Watt Place • Hamilton International Technology Park • Blantyre • Glasgow • G72 0AH

0800 919 900 • newpig.co.uk • pigpen@newpig.com